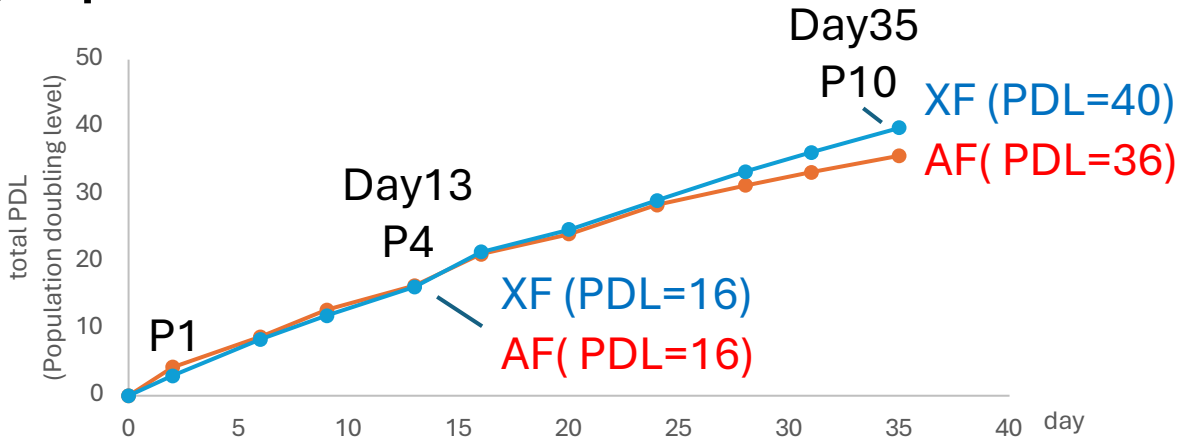


Long expansion test



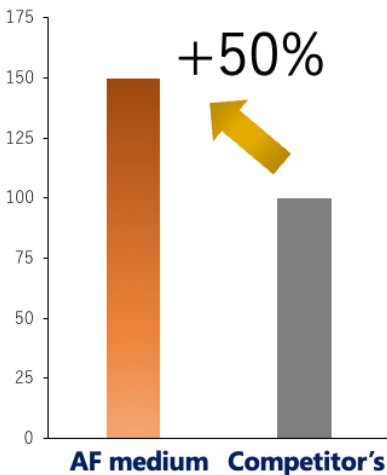
High Growth, Low-cost

Your cell manufacturing costs may be reduced by changing our products

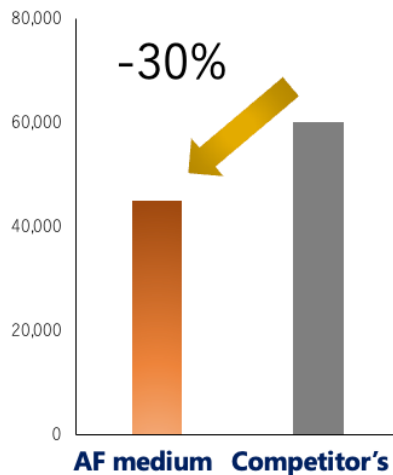
An example of manufacturing cost calculation

	AF Medium (45,000 JPY)	Competitor's (60,000 JPY)
Starting cell number	1.0 x 10 ⁷ cells	
Target cell number	1.0 x 10 ⁹ cells	
Doubling time	20 h	30 h
Culture day	6 days	9 days
Medium exchange	0	1~2 times
Medium amount	6.6 L	7,2~13,2 L
Total medium cost	630 k JPY	90-162 k JPY

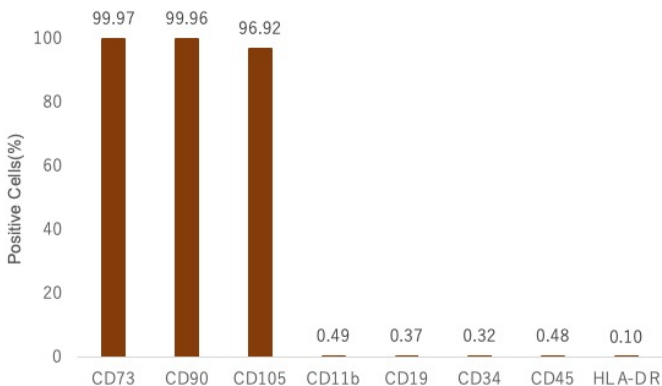
Cell Growth



Unit price



MSC marker level



Differentiation potential

